

Compact Current

CAMPUS COMPACT

INSIDE

On Campus: Members Aid Katrina Victims	2
Newman Award Recipients	3
New Web Design	5
Students Honored	6
Ehrlich Faculty Award	7
Online Member Survey	7
Good Reads	8

Educating Citizens
Building Communities

FALL 2005

Compact Current is the newsletter of Campus Compact, which provides leadership, resources, and advocacy to support civic education, community building, and campus engagement for more than 950 member campuses.

Presidents, Legislators Celebrate Campus Compact's 20 Years of Progress

U.S. legislators joined foundation and higher education leaders, including college and university presidents from around the country, in celebrating the 20th anniversary of Campus Compact on October 26.

Campus Compact kicked off a year of celebration in Washington, DC, in an event that highlighted the role of colleges and universities in educating citizens and building strong communities.

"Over the past 20 years, we've seen an increase in community service and civic engagement, thanks in large part to Campus Compact," stated keynote speaker Jeanne Shaheen, former governor of New Hampshire, who now directs the Institute

of Politics at Harvard University's John F. Kennedy School of Government. Shaheen was referring to the sharp rise in student service noted in Campus Compact's annual member survey, which last year found that more than 30% of students at Campus Compact's member campuses engage in service, contributing an estimated \$4.45 billion

"Over the past 20 years, we've seen an increase in community service and civic engagement, thanks in large part to Campus Compact."

Jeanne Shaheen, former governor of New Hampshire and director of Harvard University's Institute of Politics

to their communities. Shaheen also challenged campuses to sustain recent growth in student voting levels, which rose 11% between 2000 and 2004.

Legislators and staff members from both sides of the aisle joined in celebrating the progress made over the past 20 years and looking forward to 20 years of future growth. Senator John Kerry (D-MA) praised bipartisan support for service, noting, "We need a call to service in this country." Also present were Representative Christopher Shays (R-CT), who co-chairs the Community Service Caucus; Representative Allen Boyd (D-FL); Repre-

continued on page 4 ▶



Senator John Kerry addresses education, government, and foundation leaders at Campus Compact's 20th anniversary kick-off event in October.



Campus Compact

Campus Compact is a national coalition of more than 950 college and university presidents—representing some 5 million students—who are committed to fulfilling the civic purposes of higher education. As the only national association dedicated solely to this mission, Campus Compact is a leader in building civic engagement into campus and academic life. Through our national office and network of 31 state offices, members receive the training, resources, and advocacy they need to build strong surrounding communities and teach students the skills and values of democracy.

Campus Compact comprises a national office based in Providence, RI, and 31 state offices in CA, CO, CT, FL, HI, IA, IL, IN, KS, KY, LA, MA, ME, MI, MN, MO, MT, NC, NH, NY, OH, OK, OR, PA, RI, TX, UT, VT, WA, WI, and WV. For contact and other information, see www.compact.org.

Board of Directors

CHAIR

Mark Gearan Hobart and William Smith Colleges

VICE-CHAIRS

Judith Hansen Southwestern Oregon Community College

Martin Jischke Purdue University

MEMBERS

Louis Albert Pima Community College

Lawrence S. Bacow Tufts University

John J. DeGioia Georgetown University

Evan S. Dobbelle New England Board of Higher Education

Juliet Garcia University of Texas at Brownsville

Amy Gutmann University of Pennsylvania

Teresa Iannaconi KPMG LLP

John Keating University of Wisconsin-Parkside

Leo Lambert Elon University

Tashia Morgridge TOSA Foundation

Toni Murdock Antioch University Seattle

James Ortiz Southern Maine Community College

Richard R. Rush California State University Channel Islands

Michael J. Sheeran, S.J. Regis University

Beverly Daniel Tatum Spelman College

James Votruba Northern Kentucky University

Harris Wofford America's Promise

EXECUTIVE STAFF

Elizabeth Hollander Executive Director

ON CAMPUS

Member Campuses Mobilize to Aid Katrina Victims

Higher education's response to Hurricane Katrina has been one of the few bright spots to emerge from a disaster that rocked an entire region.

Colleges and universities around the country mobilized with astonishing swiftness to provide individuals, schools, and communities affected by the hurricane with a massive infusion of direct and indirect aid.

Campus Compact's 950+ member campuses and 31 state offices have been at the forefront of this effort. Hundreds of campuses have opened their doors to displaced students, often waiving tuition and other fees. Others are working directly with affected com-

munities and families, providing expertise, housing, food, equipment, and medical care. State Compact offices, including those in Florida and Maine, are helping to coordinate the efforts of campuses in their states.

Initiatives reported by individual member campuses include raising hun-

dreds of thousands of dollars for the American Red Cross and other relief agencies, housing up to 500 evacuees on campus, providing medical assistance and

supplies, staffing shelters, and working to restore damaged levees. In addition to accepting displaced students, members have reached out to affected colleges and universities by creating special courses for delayed students, finding jobs for faculty, and even hosting entire departments from schools hit by the hurricane.

"Campus Compact member schools have played a major role in helping those affected by the hurricane rebuild their communities and their lives."

Elizabeth Hollander
Executive Director
Campus Compact

Not content with providing only immediate assistance, many member schools report initiating long-term programs such as sustained funding efforts, alternative breaks to help rebuild, service-learning courses, and public dialogues

continued on page 5, last column

Compact Current is the newsletter of Campus Compact, a national nonprofit organization based at Brown University. *Compact Current* is distributed three times a year to all Campus Compact member institutions.

Editorial Correspondence: Address all correspondence to Pamela Mutascio, Editor, *Compact Current*, Campus Compact, Box 1975, Providence, RI 02912, email pmutascio@compact.org.

Campus Compact receives substantial support from **Learn and Serve America**, which supports service-learning programs across the country by providing funding and training.

This publication was made possible in part by a grant from Carnegie Corporation of New York. The statements made and views expressed are solely the responsibility of the author. Campus Compact receives financial support from: Carnegie Corporation of New York; the Corporation for National and Community Service; The Ford Foundation; John S. and James L. Knight Foundation; KPMG Foundation; McCormick Tribune Foundation; The Pew Charitable Trusts; The Pierre and Pamela Omidyar Fund; The Sallie Mae Fund; The Spencer Foundation; State Farm Companies Foundation; TIAA-CREF; and the UN Foundation.

Newman Award Honors Student Leaders

Campus Compact is pleased to announce that the 2005 Frank Newman Leadership Award, in its inaugural year, has been presented to Tanisha Douglas of Georgetown University and Rachel Williams of Southern University at New Orleans.

The award, which is administered by Campus Compact, honors students with demonstrated leadership potential and outstanding commitment to public service.

Tanisha Douglas, nominated by President John DeGioia, studies the politics and cultures of sub-Saharan Africa at Georgetown University's School of Foreign Service. Douglas is a founding member of Students Taking Action Now: Darfur (STAND), an awareness and fundraising effort with chapters at more than 40 colleges and universities around the world. She recently spent a year abroad in Tanzania. Douglas has also worked as a mentor to court-involved youth in the District of Columbia, offering workshops on legal rights, decision-making skills, job and college preparedness, and conflict resolution.



Tanisha Douglas, Georgetown University

Rachel Williams, nominated by President Press Robinson, is a business and political science major at Southern University at New Orleans, where she is active in the university's Student Government Association. Williams cites motherhood as the main catalyst for in serving her community. In addition to other work, she works with troubled youth in an after-school arts program, co-directs the Youth Ministry at her church, and is currently developing a math and reading tutoring program for students in a local public school.

Finalists for the 2005 award were **Gerren Glenn Price** from the University of Pennsylvania (President Amy Gutman), **Anna Quilter Glodowski** from Elon University (President Leo Lambert), and **Chelsea Quinn Steele** from Purdue University (President Martin Jischke).

Frank Newman, a Campus Compact co-founder, believed deeply in students both as future leaders and as powerful change agents. The Frank Newman Leadership Award continues his legacy by providing financial support to students with leadership potential demonstrated through public work. Presidential support is an important part of the award, as recipients also receive guidance from their presidents and campus staff in attaining their educational and public service goals. **CC**



Rachel Williams, Southern University at New Orleans

WEBlink 

The Newman Award is supported by the Frank Newman Leadership Fund; for more information, please see www.compact.org/newman. 2006 applications will be available in December 2005.

save
the
date

**October 16-17,
2006
Chicago, IL**

Join us for Campus Compact's 20th Anniversary end-of-year gala: A Celebration of Partnerships between Campuses and Their Communities.

Celebrate 20 years of educating citizens and building communities through local, state, national, and international partnerships



For more information, go to www.compact.org/20th

Help craft a vision for the civic mission of higher education over the next 20 years

join
us in
2006

Sponsored by national Campus Compact and Illinois Campus Compact

Presidents, Legislators Celebrate 20th Anniversary



John Hoffmire, director, Center on Business and Poverty, University of Wisconsin-Madison, with Valerie Fields, executive director of Louisiana Campus Compact



Don Kennedy, former president of Stanford University and son, office manager, Campus Compact; Susan Stroud, former Campus Compact board chair and president of Hobart and

representative John McHugh (R-NY); Representative Barney Frank (D-MA); and numerous congressional staff members, including representatives from the House Education Committee.

Speaker David Eisner, CEO of the Corporation for National and Community Service (CNCS), addressed higher education's public role from his agency's perspective and encouraged college presidents to make access to higher education a priority. CNCS, through its Learn and Serve America, AmeriCorps, and other programs, is a major supporter of campus-based service and service-learning efforts.

Also speaking was Joshua Goldstein, one of five winners of the 2005 Howard R. Swearer Student Humanitarian Award, who discussed student engagement in the context of global citizenship. Goldstein is now Associate Director of the Global Youth Partnership for Africa, an organiza-

tion that grew out of his work as a student at the University of Maryland-College Park.

The 20th anniversary event gave college and university presidents from across the nation a chance to discuss the vital work they do in their communities with their Congressional representatives. These conversations were extended the following day as both individual presidents and regional caucuses met with representatives on Capitol Hill. Joining in these discussions were leaders from many of Campus Compact's 31 state offices, who coordinate state and regional campus engagement efforts.

Also in attendance at the event were executives from a range of education organizations and foundations with an interest in student service and civic engagement. Those present included directors from the American Association of Community Colleges (AACC), the

20th Anniversary *(continued from page 1)*



nd editor of *Science Magazine*; Elizabeth (Betty) Johnson, founding director of Campus Compact; and Mark Gearan, and William Smith Colleges. PHOTOS: Jenn Meeropol



TOP: David Eisner, CEO, Corporation for National and Community Service

CENTER: Representative Allen Boyd with Florida Campus Compact Executive Director Dee Dee Rasmussen

BOTTOM: Jeanne Shaheen, former New Hampshire governor and current director of the Institute of Politics at Harvard University's Kennedy School of Government

Association of American Colleges and Universities (AAC&U), Learn and Serve America, the Points of Light Foundation, the Carter Partnership Foundation, Global Youth Partners for Africa, TOSA Foundation, and KPMG Foundation, which generously sponsored the dinner and reception.

Campus Compact's 20th anniversary year will culminate in an October 2006 celebration in Chicago, honoring campus-community partnerships that contribute both to students' civic understanding and to community development at the local, state, national, and international level. [CC](#)



Katrina Aid

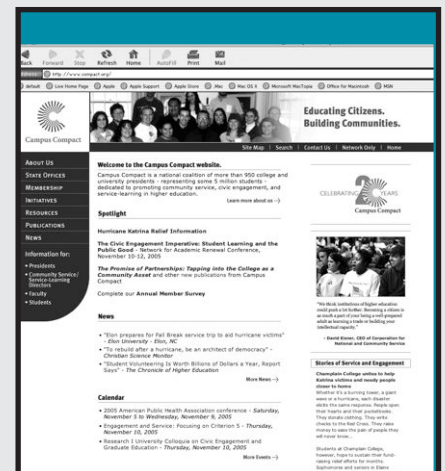
(continued from page 2)

about race and poverty. Most recently, member colleges and universities that were themselves devastated by the storm are committing to playing a key role in rebuilding their communities.

The scope and swiftness of this response are a testament to the commitment of higher education—and particularly of Campus Compact member campuses—to serving the public good.

Learn about Ongoing Work

Campus Compact has created a task force to provide resources and coordination support for members who want to provide service to Gulf Coast communities that were affected by Hurricane Katrina and other recent storms. For continuing updates, as well as more information about what Campus Compact members and state offices are doing to help, please see www.compact.org/katrina.

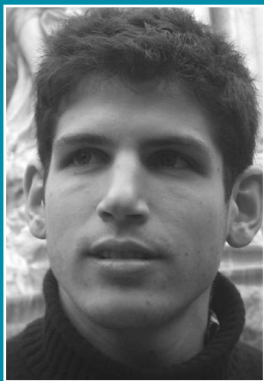


New Web Design Launched

Campus Compact's website has a new look. The more streamlined format makes finding the information you need faster and easier than ever. Check it out at www.compact.org.

Outstanding Students Share National Honors

Campus Compact's 2005 Howard R. Swearer Student Humanitarian Award honors the work of five outstanding students whose commitment has changed their campuses and their communities. This year's winners have worked on global and local issues that include health care, education, energy, and social justice.



Joshua Goldstein UNIVERSITY OF MARYLAND-COLLEGE PARK	Ravneet Kaur STANFORD UNIVERSITY	Harriet McKenzie BREVARD COMMUNITY COLLEGE	Stephen Merrett OBERLIN COLLEGE	John Velasco MASSACHUSETTS INSTITUTE OF TECHNOLOGY
--	--	--	---	--

Joshua Goldstein has not only been a leader in developing civic engagement at the University of Maryland-College Park, he has also taken an active role in addressing global issues through service and advocacy work in Uganda, where he works with other Student Global Ambassadors to help develop future leaders in the Namuwongo Community.

Stanford University student **Ravneet Kaur's** work is about access to information and access to health care. Through her work as a translator and her efforts with community-based health care initiatives, Kaur's leadership has had profound effects on both her home community in New York and her school community in California.

Harriet McKenzie puts helping others in the forefront of her life and career. As she pursues nursing studies at Brevard Community College, she provides a critical service to her community as an emergency room volunteer at a local hospital, where she has contributed more than 1,600 hours as an advocate for patients and their families.

Oberlin College student **Stephen Merrett** is continuing in the academic tradition of utilizing research to improve the environment. Merrett co-founded the Youth Energy Project (YEP!), which raises funds and designs energy conservation projects; he also works with Biodiesel Oberlin, which is working to establish a community-scale facility to produce a nontoxic alternative fuel.

Through his innovative iMath program, **John Velasco** of the Massachusetts Institute of Technology has sparked middle school students' interest and skill in math while helping them develop technological capabilities. iMath, an interactive curriculum with a mentoring component, involves 70 students at five schools as well as undergraduates, graduates, and alumni.

Campus Compact has honored the work of five students a year since 1987 through the Swearer Award. Winners are chosen for outstanding public service or success in creating an innovative approach to a social, educational, environmental, health, economic, or legal issue within a community. Winners receive \$1,500 each to help strengthen or sustain a community program of their design or choice. The 2005 Swearer Award was sponsored by The Sallie Mae Fund.

WEBlink 

For more information about the award, winners, and finalists, visit www.compact.org/swearer. Applications for the 2006 award will be available in December 2005.

Ehrlich Award Winner Mixes Scholarly and Community Work

Seth S. Pollack, Associate Professor of Service-Learning and Director of the Service-Learning Institute at California State University, Monterey Bay, has

received Campus Compact's 2005 Thomas Ehrlich Faculty Award for Service-Learning. He was chosen for his exemplary use of service-learning as a teaching and learning method, his scholarly contributions to the field, and his efforts to institutionalize service-learning on campus.

Pollack's research has focused on the intersection of service-learning, multicultural education, and social justice education. His commitment to establishing an environment that supports community-based teaching, learning, and research has led to the institution of a service-learning requirement for graduation and contributed to a 50% rate of student involvement in service-learning.

The award panel also selected 14 finalists for exemplary service-learning work: Joan Arches of the University of Massachusetts-Boston; Melody Bowdon of the University of Central Florida; Prince Brown, Jr., of Northern Kentucky University; Patti

Clayton of North Carolina State University; Julie Ellison of the University of Michigan; Gregory S. Jay of the University of Wisconsin, Milwaukee; Joseph Kane of Mills College; Christopher Koliba of the University of Vermont; Margarita Maria Lenk of Colorado State University; Eric Popkin of Colorado College; Pamela Reynolds of Gannon University; Charles Strain of DePaul University; Nina Tamrowski of Onondaga Community College; and Adam Weinberg of Colgate University.

The Thomas Ehrlich Faculty Award for Service-Learning, sponsored by TIAA-CREF, recognizes faculty members whose teaching, scholarship, and leadership on campus and in the community exemplify exceptional service-learning practices. Campus Compact honors this year's winner and finalists for their contributions to their campuses, to their communities, and to the field of service-learning. [CC](#)

WEBlink 

To learn more about the award, winners, and finalists, please see www.compact.org/ehrllich.

Applications for the 2006 award will be available in December 2005.



Seth S. Pollack, Associate Professor of Service-Learning and Director of the Service-Learning Institute at California State University, Monterey Bay, and recipient of the 2005 Thomas Ehrlich Faculty Award for Service-Learning.

Be Heard!

Complete Campus Compact's 2005 Member Survey

Campus Compact members can contribute to a national effort to spread the word about campus engagement efforts by filling out the Annual Members Survey, which is available online now.

The survey tracks data from the 2004-2005 academic year. Campus Compact uses aggregate data to inform legislators, the media, and others about the

value of the work colleges and universities do in their communities.

2004 survey results revealed that students at Campus Compact member campuses provide \$4.45 billion in service to their communities each year. Five-year data showed a strong trend toward engagement on virtually all measures. These findings generated high interest

and discussion among higher education and the media this year.

We invite you to complete this survey so that your college or university is represented in the 2005 results. The deadline for completing the survey is Friday, December 2. If you have any questions about the survey, please contact Pamela Mutascio at pmutascio@compact.org.

GoodReads

The Promise of Partnerships:

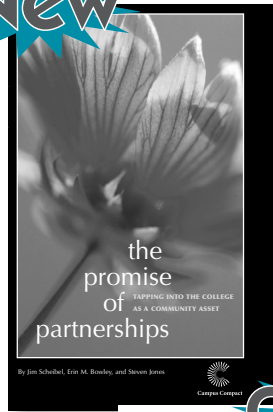
TAPPING INTO THE COLLEGE AS A COMMUNITY ASSET

Designed for community-based organizations seeking to establish or strengthen partnerships with higher education, this book looks at the benefits and challenges of partnerships, the planning process, making contact, working with college students and faculty, sharing resources, and sustaining and assessing partnerships. Each section of the book includes a set of tools, such as tips, checklists, and best practices.

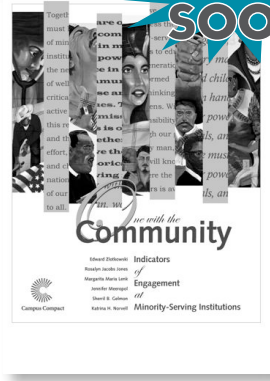
2005, 110 pages. \$18 members, \$23 nonmembers.

Now community-based organizations can get the Campus Compact member price on The Promise of Partnerships! See www.compact.org/publications for details.

New



Coming soon



One With the Community:

INDICATORS OF ENGAGEMENT AT MINORITY-SERVING INSTITUTIONS

Based on the findings of a multi-year research project, this volume profiles successful community engagement practices at historically Black colleges and universities, Hispanic-serving institutions, and Tribal colleges.

Engagement levels at these institutions outstrip levels seen elsewhere on nearly every measure; the innovative ways these institutions put engagement into practice offer models for all of higher education. This is the second volume from Campus Compact's Indicators of Engagement Project, supported by Carnegie Corporation of New York.

2005, 205 pages. \$35 members, \$46 nonmembers.



Campus Compact

Brown University / Box 1975

Providence, RI 02912-1975

401 867-3950

401 867-3925 fax

campus@compact.org

www.compact.org

Non-Profit Org.
U.S. Postage
PAID
Permit No. 202
Providence, RI